

BUSH HALL

CONFERENCES, MEETINGS
& CORPORATE AWAY DAYS



BUSH HALL 310 Uxbridge Road London W12 7LJ

T 020 8222 6955 E notes@bushhallmusic.co.uk W www.bushhallmusic.co.uk



SOCIAL AND CORPORATE ENTERTAINMENT

A beautifully restored Edwardian dance hall, Bush Hall's elegance & character lends an air of decadence to your event.

We offer a wide range of options, allowing you the versatility to tailor the event to your own requirements. We can deal with everything from evening drinks receptions to silver-service dinners and will work closely with you to make sure your event is a success.

Past clients have included:

Vogue, Channel 4, MTV, BBC, Damien Hirst, NME, Endemol, Paramount Pictures, L'Oreal, Cable & Wireless, Nintendo, Granada, GQ Magazine, Hat Trick, SKY, Tatler, Hello Magazine, Red Bee Media, Tiger Aspect, Lion TV, Fifteen, Fulham & QPR football clubs and many happy private clients.

THE HISTORY OF BUSH HALL

In 2001 Charlie Raworth and Emma Hutchinson, the present owners and directors of the company, reclaimed Bush Hall as a music and entertainment venue.

Extensive renovation work was carried out in order to restore Bush Hall to the former glory of its past life as the Carlton Dance Hall, with ornate Edwardian plasterwork and décor. An added masterstroke came with the installation of six two-tier Austrian lead crystal chandeliers. These have become iconic features within what is a truly elegant space.

In its formative years, Bush Hall was filled with music and dance of all kinds, especially during the roaring twenties and into the 1930's. Bush Hall was built between 1904/5 by a rogue publisher called W.C. Hurndall: one of three venues built in London as a gift to each of his 3 daughters. Bush Hall was undoubtedly his favourite as he retained a flat at the top, mainly occupied by his mistress.

The early structural use of steel girders helped the building survive the blitz and it became a 'British Restaurant' (grand soup kitchen) during World War II and subsequent rationing. Thereafter in the late fifties and sixties it became a bingo hall with a musical edge, as it was used as rehearsal space by local West London talent Adam Faith, Cliff Richard and The Who. It almost went to ruin in the seventies, before it was racked up to be a snooker and social club for 20 years in the 80's and 90's, with an emphasis on late night social due to the demise in the popularity of snooker in the latter years). It then turned a full circle to become the legendary music and entertainment venue that is Bush Hall.

CONFERENCES, MEETINGS & CORPORATE AWAY DAYS

HALF-DAY MEETINGS

8am - 12pm / 12pm to 4pm
£460+vat

ALL-DAY MEETINGS

8am - 4pm
£920+vat

EVENING MEETINGS / CONFERENCES

4pm - 10pm
£995+vat

HOURLY RATE AND EXTRA HOURS

£115+vat

HIRE INCLUDES

Main Hall, Green Room, Foyer Bar, Terrace Bar & Terrace
Duty Manager
PA System
Events organisation
280 Chairs
14 Large Round Tables (to seat up to 10)
10 Small Round Tables (to seat up to 6)
14 Trestle tables

EXTRAS

Venue security (compulsory for events with over 50 people) £95+vat

Projector set to include: £250+vat

Projector (long-throw)

1x Projector mount

12ft x 9ft Screen and stand

PA and Microphone usage

£100+vat

Stage/ PA Removal

£100+vat

Backdrop Removal

£30+vat

Use of Venue Rigger

£25+vat per hour

Technical support

£150+vat per session

Radio mic

£40+vat per mic + d&c

Paper table cloths

£2 per cloth

Table cloths (round)

£6+vat each + d&c

Table cloths (trestle)

£8.50+vat each + d&c

Lecturn

£40+vat + d&c

Tea / Coffee / Juice / Water

£75+vat per session (Self-service)

d&c = delivery and collection

Please note: Our rates are based on full licensed venue hire, therefore for 'dry hire' / bringing in any quantity of your own drinks, there will be an additional corkage charge. Please contact the venue for a full quote.

TRANSPORT LINKS

Shepherds Bush Central Line (10 min walk)

Shepherds Bush Market Hammersmith and City line (5 min walk)

PARKING

We do not have a car park.

Street parking in the near vicinity costs £2.80 per hour Monday - Friday until 5:30pm and is free Saturday and Sundays.

DISABLED ACCESS

Bush Hall has access at ground floor level. There are no steps into the building. We have a disabled toilet.

TAXIS

Browns T: 020 8749 5555 / Astoria T: 020 8742 9955 / Addison Lee T: 020 7387 8888

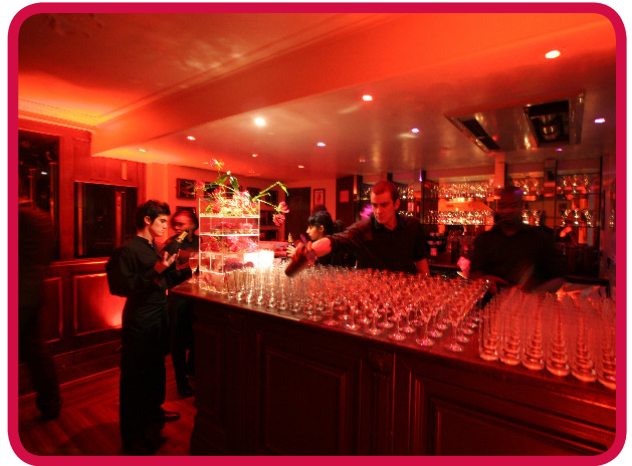
SMOKING

Smoking is only allowed on the outside terrace on the first floor.

Dimensions - All in metres	Length	Width	Height
Performance Hall	19.36	9.958	
Height from floor to ceiling			6.273
Height from floor to recess			7.395
Height from stage to ceiling			5.365
Height from floor to chandelier			3.64
Reception bar (main foyer)	3.616	2.92	2.216
Reception bar (main foyer) including bar	8.678	4.573	2.636
Entrance	5.189	1.538	
Terrace bar	6.951	5.906	2.876
Outside terrace	5.814	3.793	
Green Room	3.96	4.26	
Green Room corridor	4.989	1.51	
Store Room	4.95	1.51	
Store Room corridor	4.565	1.51	
Picture frames x 12 in hall	1.398	0.941	
Round tables to seat 10 - 15 on site	1.52		0.8
Round tables to seat 6 - 12 on site	1.07		0.8
Trestle tables - 4 on site	1.83	0.76	
Dance floor	4.88	4.88	
Staging	3.66	4.88	
Each piece of staging	2.44	1.22	
Staging legs			0.9
Piano	1.55	2	
Chair - floor to height of seat			0.44
Chair - width and depth of seat		0.38	
Chair - top of chair to floor	0.86		
FOH desk	2.45	1.29	
Speaker stacks	1.22	1.29	
Drape	5	2.7	



Main Hall



Foyer Bar



Main Hall - Set up



Terrace Bar



Main Hall - Set up



Outside Terrace